

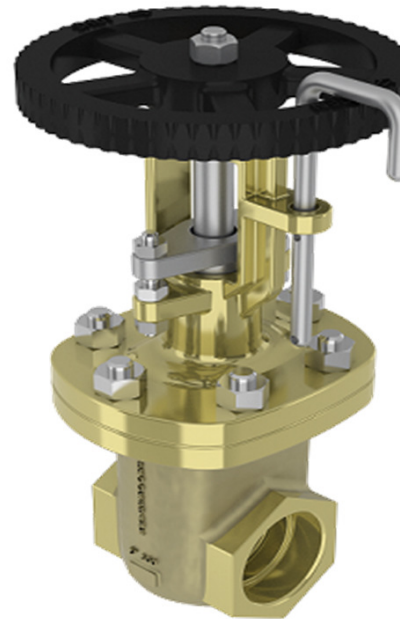
Description

The GAV28/29 is a wedge gate valve, with a bolted bonnet, rising stem/handwheel, solid wedge and screwed connections. Manufactured as standard in NiAlBr giving long service life on seawater applications.
In conformance with the Pressure Equipment Directive 97/23/EC.

Standard Range,
GAV28 with integral seats,
Sizes: 1/2" to 3"
Connections: Screwed.

GAV29 with renewable seats,
Sizes: 2" to 3"
Connections: Screwed.

Pressure class: 150# & 300#



Materials

Regularly manufactured in a full range of materials including:

- Nickel Aluminium Bronze – ASTM B148
- Nickel Aluminium Bronze - DS02 747 Part 3
- Gunmetal – DS02 830 Part 1
- Bronze – ASTM B61/B62
- Brass – HTB1
- Titanium – ASTM B367
- Hastelloy®
- Monel®

Other materials available on request

Features

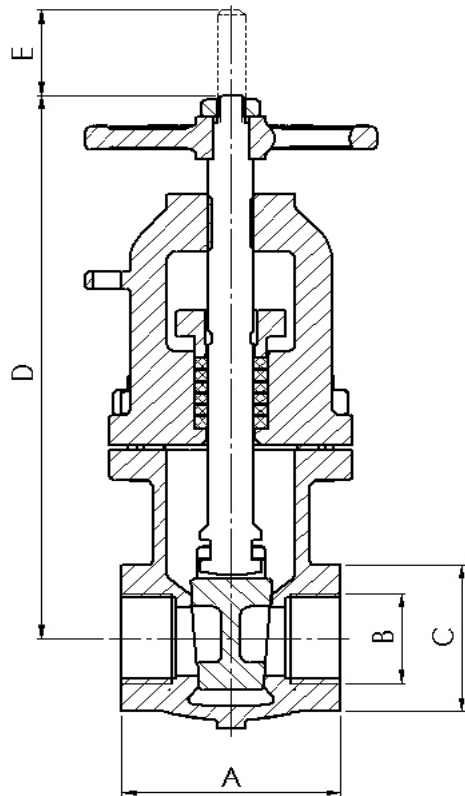
- Bolted Bonnet
- Outside screw & yoke
- Rising stem & handwheel
- Solid wedge
- Multiple ring stem packing
- Back seat facility

Options

- Integral or renewable seats
- Locking facility
- Screwed threads: NPT, BSPP, BSPT

Specifications

- ANSI B16.34 Wall Thickness
- ANSI B1-20.1 Screwed Ends
- PED Conformity
- Designed generally in accordance with: BSEN 12288 Series A (formerly BS5154)



Dimensions

Screwed NPT

VALVE SIZE		mm					WEIGHT kg	
INCH	mm	A	B Thread	C	D	E	Class 150	Class 300
1/2"	15	65	1/2" NPT	33	145	20	2	2
3/4"	20	72	3/4" NPT	42	161	23	3	3
1"	25	76	1" NPT	55	201	32	4	4
1 1/2"	40	100	1 1/2" NPT	73	246	44	7	7
2"	50	102	2" NPT	88	321	55	10	12
3"	80	130	3" NPT	131	423	83	19	22

Pressure class: 150# & 300#

GAV28:
shown with integral seats

GAV29:
has renewable seats

