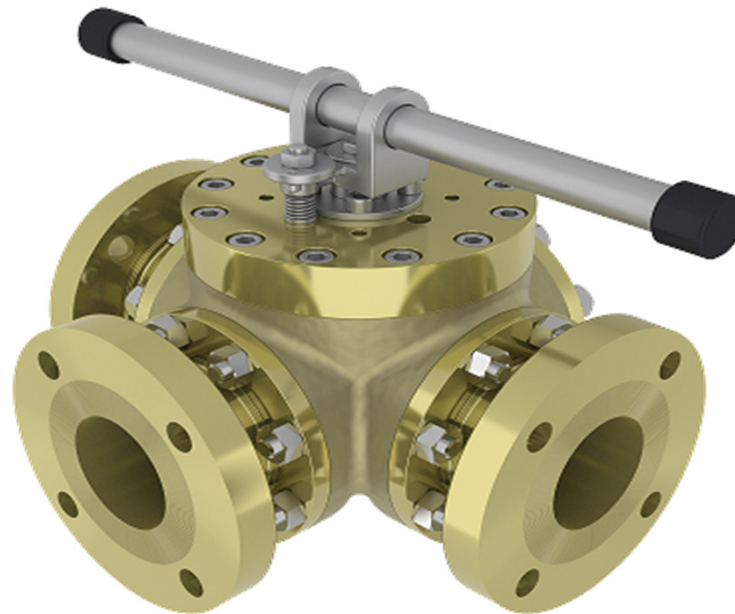


**Description**

The BAV10 is a flanged modular multiport diverter floating ball valve, with 2, 3 or 4 ports. Available in "L" or "T" full port configurations. Suitable for mixer applications. Manufactured as standard in NiAlBr giving long service life on seawater applications.

In conformance with the Pressure Equipment Directive 97/23/EC.

Standard Range,  
Sizes: 1" to 10"  
Connections: ANSI 150 & 300.



**Materials**

**Regularly manufactured in a full range of materials including:**

- Nickel Aluminium Bronze – ASTM B148
- Nickel Aluminium Bronze - DS02 747 Part 3
- Gunmetal – DS02 830 Part 1
- Bronze – ASTM B61/B62
- Brass – HTB1
- Titanium – ASTM B367
- Hastelloy®
- Monel®

**Other materials available on request**

**Features**

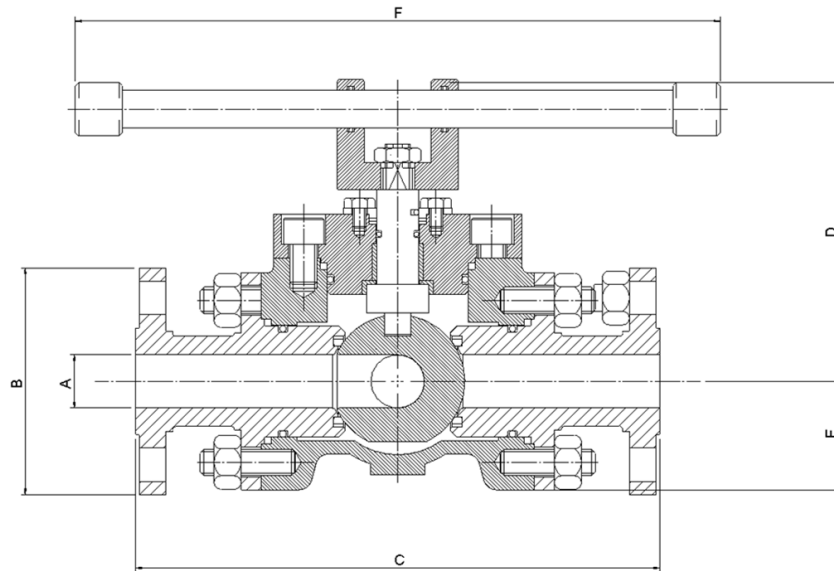
- Anti-static / Anti blowout stem
- ISO 5211 mounting platform
- Bi-directional Flow
- Solid Ball

**Options**

- Bare shaft (for actuation by others)
- Actuation to customer specifications
- Locking facility (open & closed)
- Extended stems (insulation allowance)

**Specifications**

- ANSI B16.5 Flange Dimensions
- ANSI B16.10 Face to Face Length
- ANSI B16.34 Wall Thickness
- PED Conformity
- Designed generally in accordance with: API 6D & ISO 17292 (formerly BS5351)

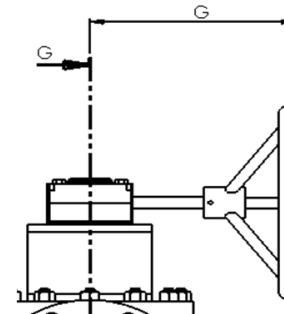


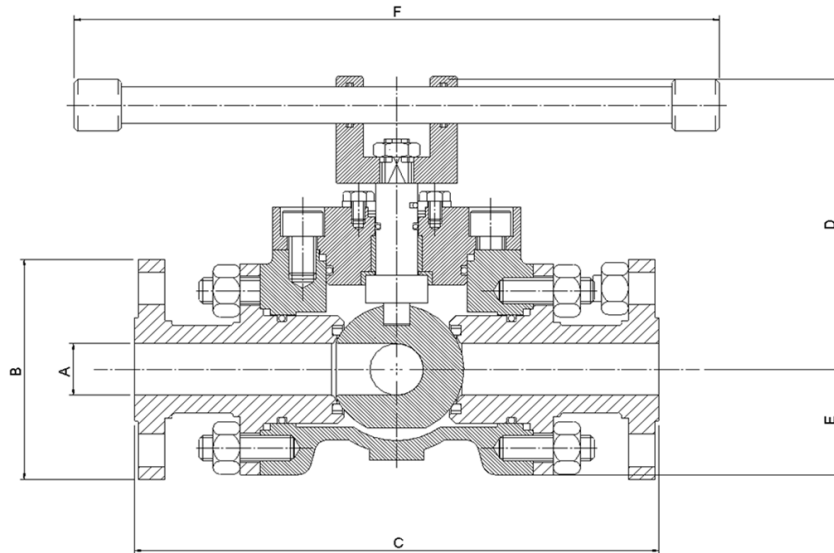
**Dimensions**

**ANSI 150**

VALVE SIZE		mm							WEIGHT	Dwg
INCH	mm	A	B	C	D	E	F	G	kg	
1"	25	25	108	248	144	52	305	N/A	18	4368
1 1/2"	40	38	127	266	160	52	305	N/A	27	4370
2"	50	51	152	306	188	67	305	N/A	34	4374
3"	80	76	191	354	177	80	457	N/A	63	4382
4"	100	102	229	418	225	111	914	N/A	110	4386
6"	150	152	279	513	297	158	457	305	250	4390
8"	200	203	343	720	695	198	500	316	620	4412
10"	250	254	406	850	936	238	800	420	906	4417

\*MEASURED FROM CENTRE LINE TO OUTSIDE FACE OF GEARBOX HANDWHEEL AS SHOWN BELOW





**Dimensions**

VALVE SIZE		mm							WEIGHT	Dwg
INCH	mm	A	B	C	D	E	F	G	kg	
1"	25	25	118	270	144	52	305	N/A	19.5	4369
1 1/2"	40	38	156	286	160	58	305	N/A	30	4371
2"	50	51	165	313	188	67	305	N/A	37	4375
3"	80	76	190	355	177	80	457	N/A	67	4383
4"	100	102	254	441	350	111	225	N/A	166	4387
6"	150	152	318	564	338	159	610	323	292	4391
8"	200	203	381	746	695	200	500	323	648	4413
10"	250	254	445	886	936	238	800	422	963	4418

\*MEASURED FROM CENTRE LINE TO OUTSIDE FACE OF GEARBOX HANDWHEEL AS SHOWN BELOW

