

**Description**

The BUV125 is a double eccentric butterfly valve, with a double flanged body. Manufactured as standard in NiAlBr and Teflon seat, to give long service life on seawater applications. Suitable for bi-directional flow with bubble tight shutoff.

In conformance with the Pressure Equipment Directive 97/23/EC

Standard Range,  
Sizes: 2" to 48"  
Connections: ANSI 150 & 300



**Materials**

**Regularly manufactured in a full range of materials including:**

- Nickel Aluminium Bronze – ASTM B148
- Nickel Aluminium Bronze - DS02 747 Part 3
- Gunmetal – DS02 830 Part 1
- Bronze – ASTM B61/B62
- Brass – HTB1
- Titanium – ASTM B367
- Hastelloy®
- Monel®

**Other materials available on request**

**Features**

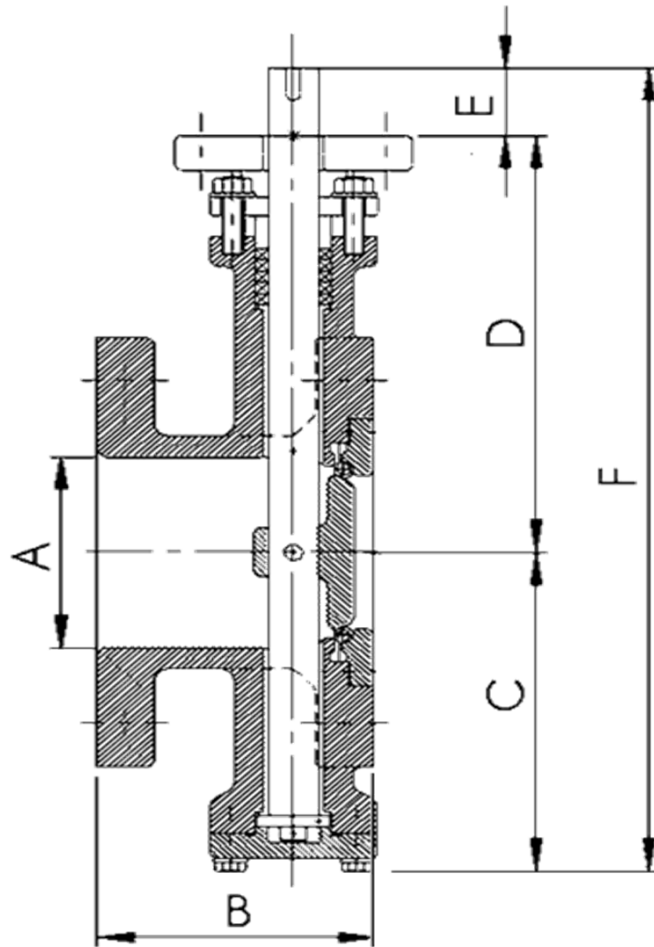
- Double eccentric action
- Bi-directional flow
- Tight shut-off at full rating
- Reduced seat wear
- Internal disc stop to prevent over travel

**Options**

- Rubber, PTFE, RTFE or Metal seats
- Fire-Safe seat option
- Bare shaft
- Lever, gear or actuated operation

**Specifications**

- ANSI B16.5 Flange Dimensions
- ISO 5752
- API 609
- MSS SP68



**Dimensions**

**ANSI 150-300**

VALVE SIZE		mm						WEIGHT kg
INCH	mm	A NB Pipe	B	C	D	E	F	
2"	50	50	108	118	168	45	331	14
2 1/2"	65	65	112	133	177	45	355	18
3"	80	80	114	144	185	45	374	22
4"	100	100	127	164	200	45	409	28
5"	125	125	140	188	217	45	450	37
6"	150	150	140	205	240	45	490	44
8"	200	200	152	223	270	60	553	64
10"	250	250	165	275	320	60	655	87
12"	296	296	178	308	350	60	718	123
14"	350	350	190	346	395	75	816	155
16"	400	400	216	385	445	75	905	224
18"	450	450	222	410	490	100	1000	255
20"	500	500	229	448	500	100	1048	321
22"	550	550	229	488	535	100	1123	410
24"	600	600	267	515	565	100	1180	487
26"	650	650	267	551	620	100	1271	565
28"	700	700	292	596	650	100	1346	685
30"	750	750	292	620	695	150	1465	818
32"	800	800	318	645	740	150	1535	1050
36"	900	900	330	710	805	150	1665	1350
40"	1000	1000	410	770	870	150	1790	1720
44"	1100	1100	410	835	930	180	1945	2010
48"	1200	1200	470	895	995	180	2070	2450