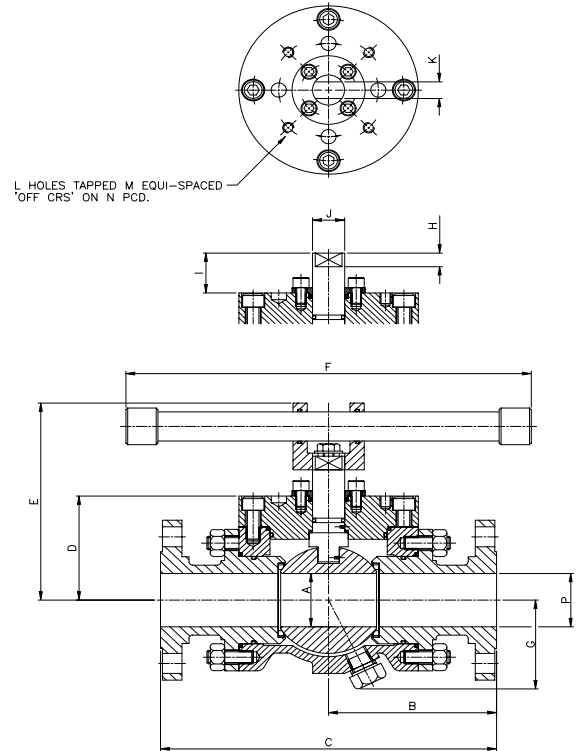


## Multiport ball valves

<b>SIZES</b>	1" - 6" full bore 1" - 8" reduced bore Other sizes on request
<b>PRESSURE</b>	ANSI Class 150 & 300 Other ratings on request
<b>FEATURES</b>	Modular design allowing 3 and 4 way configuration. L, T and double L port. Floating ball. Antistatic and anti blow out stem. ISO mounting. Various end connections.
<b>STANDARDS</b>	BS1560. BS4504, ANSI B16.5, ANSI B16.34



VALVE		OPERATION TORQUE			
		Class 150		Class 300	
SIZE		lbf.ft	Nm	lbf.ft	Nm
FB	RB				
1"	1 1/2"	12	16	17	23
1 1/2"	2"	23	31	29	39
2"	3"	45	61	58	78
3"	4"	100	135	130	176
4"	6"	180	243	270	365
6"	8"	540	729	760	1026

These figures are for clean water at full design pressure, with valves fitted with virgin PTFE seats.  
Refer to Brooksbank Valves Ltd. for other conditions.

Type	BODY DIMENSIONS							TOP WORKS DIMENSIONS							
	P	A	B	C	D	E	F	G	I	H	J	K	L	M	N
1" FB CL150	1"	1"	4 7/8"	9 3/4"	3 1/8"	5 3/4"	12"	2 1/32"	1 11/32"	27/32"	5/8"	15/32"	4	M8	70mm
1" FB CL300	1"	1"	5 5/16"	10 5/8"	3 1/8"	5 3/4"	12"	2 1/32"	1 11/32"	27/32"	5/8"	15/32"	4	M8	70mm
1.1/2" FB CL150	1 1/2"	1 1/2"	5 1/4"	10 1/2"	3 3/4"	6 1/2"	12"	2 5/16"	1 15/32"	27/32"	3/4"	5/8"	4	M8	70mm
1.1/2" FB CL300	1 1/2"	1 1/2"	5 5/8"	11 1/4"	3 3/4"	6 1/2"	12"	2 5/16"	1 15/32"	27/32"	3/4"	5/8"	4	M8	70mm
1.1/2" RB CL150	1 1/2"	1"	5 5/16"	10 5/8"	3 1/8"	5 3/4"	12"	2 1/32"	1 11/32"	27/32"	5/8"	15/32"	4	M8	70mm
1.1/2" RB CL300	1 1/2"	1"	5 7/16"	10 7/8"	3 1/8"	5 3/4"	12"	2 1/32"	1 11/32"	27/32"	5/8"	15/32"	4	M8	70mm
2" FB CL150	2"	2"	6 1/32"	12 1/16"	3 15/16"	7 1/2"	12"	3 11/32"	1 1/2"	1/2"	1 1/8"	5/8"	4	M10	102mm
2" FB CL300	2"	2"	6 5/32"	12 5/16"	3 15/16"	7 1/2"	12"	3 11/32"	1 1/2"	1/2"	1 1/8"	5/8"	4	M10	102mm
2" RB CL150	2"	1 1/2"	5 3/8"	10 3/4"	3 3/4"	6 1/2"	12"	2 5/16"	1 15/32"	27/32"	3/4"	5/8"	4	M8	70mm
2" RB CL300	2"	1 1/2"	5 1/2"	11"	3 3/4"	6 1/2"	12"	2 5/16"	1 15/32"	27/32"	3/4"	5/8"	4	M8	70mm
3" FB CL150	3"	3"	6 31/32"	13 15/16"	5"	8 1/8"	18"	4 1/16"	1 5/32"	1/2"	1 1/4"	15/16"	4	M10	102mm
3" FB CL300	3"	3"	7 9/32"	14 9/16"	5"	8 1/8"	18"	4 1/16"	1 5/32"	1/2"	1 1/4"	15/16"	4	M10	102mm
3" RB CL150	3"	2"	6 3/32"	12 3/16"	3 15/16"	7 1/2"	12"	3 11/32"	1 1/2"	1/2"	1 1/8"	5/8"	4	M10	102mm
3" RB CL300	3"	2"	6 9/32"	12 9/16"	3 15/16"	7 1/2"	12"	3 11/32"	1 1/2"	1/2"	1 1/8"	5/8"	4	M10	102mm
4" FB CL150	4"	4"	8 7/32"	16 7/16"	5 7/16"	9 3/4"	36"	4 7/8"	1 7/32"	1/2"	1 5/8"	1 3/16"	4	M12	125mm
4" FB CL300	4"	4"	8 11/16"	17 3/8"	5 7/16"	9 3/4"	36"	4 7/8"	1 7/32"	1/2"	1 5/8"	1 3/16"	4	M12	125mm
4" RB CL150	4"	3"	6 31/32"	13 15/16"	5"	8 1/8"	18"	4 1/16"	1 5/32"	1/2"	1 1/4"	15/16"	4	M10	102mm
4" RB CL300	4"	3"	7 9/32"	14 9/16"	5"	8 1/8"	18"	4 1/16"	1 5/32"	1/2"	1 1/4"	15/16"	4	M10	102mm
6" FB CL150	6"	6"	10 3/32"	20 3/16"	8 9/16"	N/A	N/A	6 25/32"	1 5/8"	3/4"	2 1/8"	1 13/16"	4	M16	140mm
6" FB CL300	6"	6"	11 3/32"	22 3/16"	8 9/16"	N/A	N/A	6 25/32"	1 5/8"	3/4"	2 1/8"	1 13/16"	4	M16	140mm
6" RB CL150	6"	4"	8 1/8"	16 1/4"	5 7/16"	9 3/4"	36"	4 7/8"	1 7/32"	1/2"	1 5/8"	1 3/16"	4	M12	125mm
6" RB CL300	6"	4"	8 9/16"	17 1/8"	5 7/16"	9 3/4"	36"	4 7/8"	1 7/32"	1/2"	1 5/8"	1 3/16"	4	M12	125mm
8" RB CL150	8"	6"	10 25/32"	21 9/16"	8 9/16"	N/A	N/A	6 25/32"	1 5/8"	3/4"	2 1/8"	1 13/16"	4	M16	140mm
8" RB CL300	8"	6"	11 9/32"	22 9/16"	8 9/16"	N/A	N/A	6 25/32"	1 5/8"	3/4"	2 1/8"	1 13/16"	4	M16	140mm

Note. Dimension 'G' is to the lowest part of the body.

'L' = Number of holes of 'M' size on a 'N' pcd