

Series: BAV110 3 Piece Floating Ball Valve

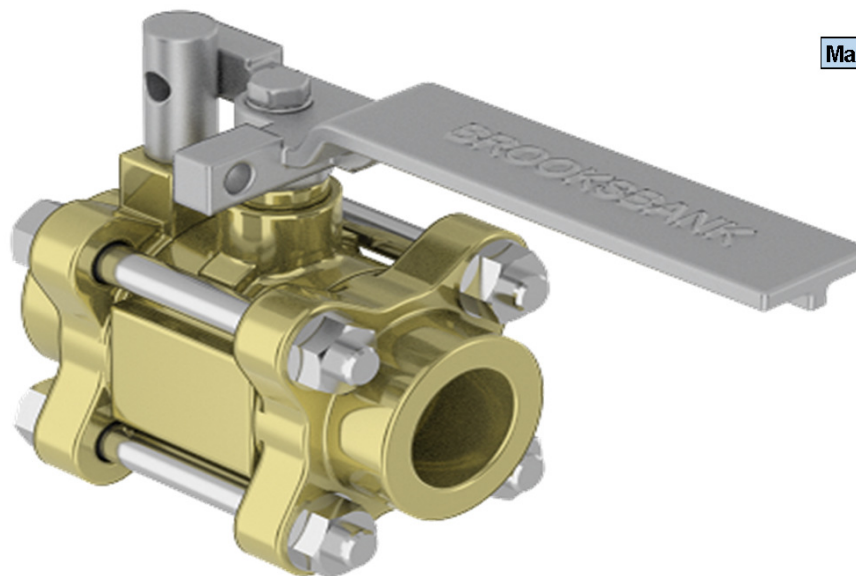
Description

The BAV110 is a 3 Piece bolted body, full bore floating ball valve. Manufactured as standard in NiAlBr giving long service life on seawater applications.

In conformance with the Pressure Equipment Directive 97/23/EC.

Standard Range,
Sizes: 1/4" to 2"
Connections: Screwed.

Pressure class 150/300#



Materials

Regularly manufactured in a full range of materials including:

Nickel Aluminium Bronze – ASTM B148
Nickel Aluminium Bronze - DS02 747 Part 3
Gunmetal – DS02 830 Part 1
Bronze – ASTM B61/B62
Brass – HTB1
Titanium – ASTM B367
Hastelloy®
Monel®

Other materials available on request

Features

Anti-static / Anti blowout stem
Cavity pressure relieving seats
Pressure equalising ball design
Bi-directional Flow
Solid Ball

Options

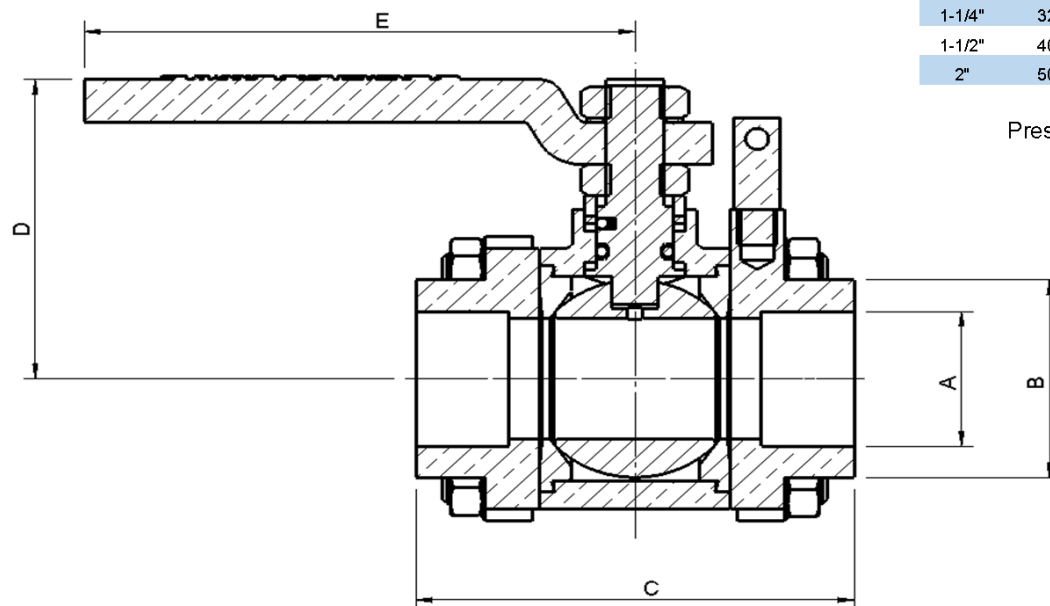
Locking facility (open & closed)
Extended stems (insulation allowance)

Specifications

- ANSI B1-20.1 Screwed Ends
- ANSI B16.34 Wall Thickness
- PED Conformity
- Designed generally in accordance with: API 6D & ISO 17292 (formerly BS5351)

Dimensions

Screwed



VALVE SIZE		mm					WEIGHT kg	Drg
INCH	mm	A	B	C	D	E		
1/4"	6	1/4" BSP	29	65	50	89	0.75	1843
3/8"	10	3/8"	29	65	50	89	0.75	1844
1/2"	15	1/2" BSP	29	65	50	89	0.6	1845
3/4"	20	3/4" BSPT	34	95	56	89	1.25	1846
1"	25	1" BSPP	44	90	67	113	1.75	1847
1-1/4"	32	1-1/4"	50	96	72	135	2.75	1848
1-1/2"	40	1-1/2" BSPP	57	113	82	141	3.25	1849
2"	50	2" BSPP	76	133	106	203	7.5	1862

Pressure class 150/300#