

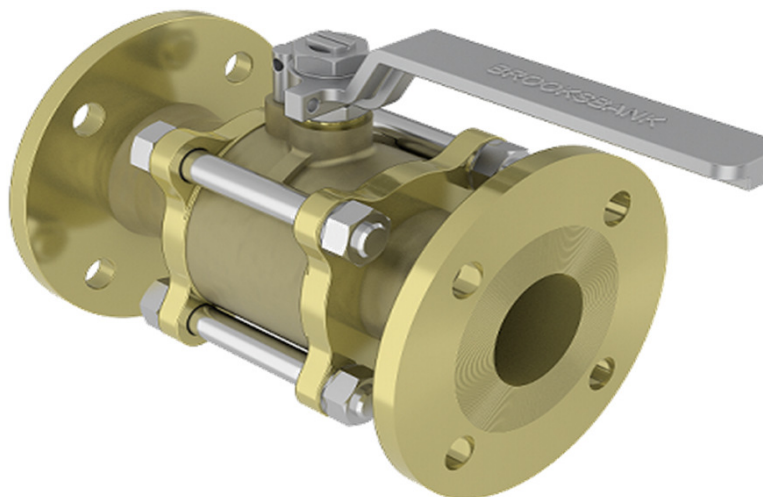
Series: BAV113
3 Piece Floating Ball Valve

Description

The BAV113 is a 3 Piece bolted body, reduced bore floating ball valve. Manufactured as standard in NiAlBr giving long service life on seawater applications.

In conformance with the Pressure Equipment Directive 2014/68/EU.

Standard Range, Sizes: 1/2" to 6"
Connections: PN16



Materials

Regularly manufactured in a full range of materials including:

Nickel Aluminium Bronze – ASTM B148 C95800
Nickel Aluminium Bronze - DS02 747 Part 3
Gunmetal – DS02 830 Part 1
Bronze – ASTM B61/B62
Brass – HTB1
Titanium – ASTM B367
Hastelloy®
Monel®

Other materials available on request

Features

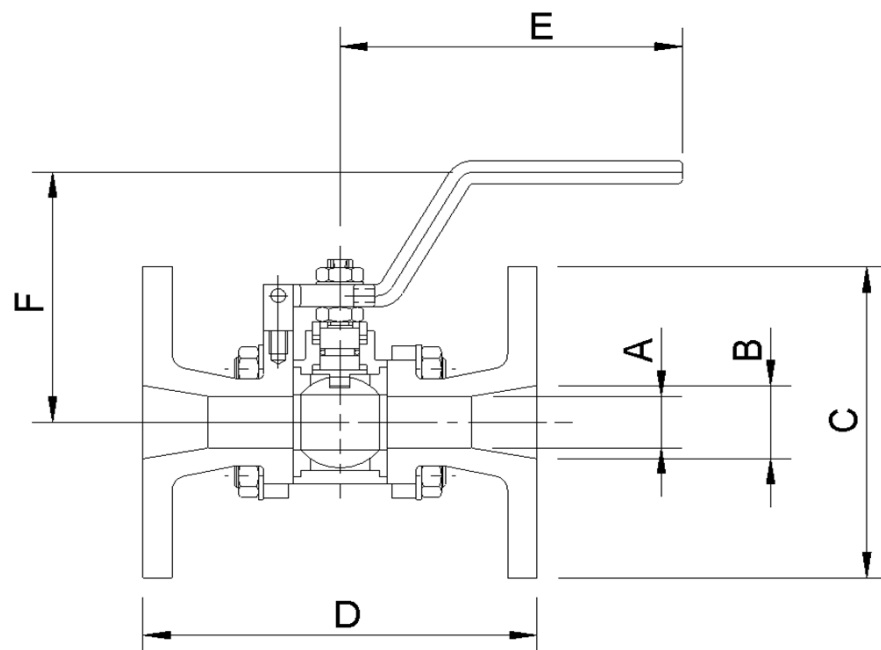
Anti-static / Anti blowout stem
Cavity pressure relieving seats
Pressure equalising ball design
Bi-directional Flow
Solid Ball

Options

Locking facility (open & closed)
Extended stems (insulation allowance)

Specifications

- ASME B16.34 Wall Thickness
- PED Conformity
- Designed generally in accordance with: API 6D & ISO 17292 (formerly BS5351)



Dimensions

PN16

VALVE SIZE		mm						WEIGHT	Drg
INCH	mm	A	B	C	D	E	F	kg	
1/2"	15	12.7	14	95	108	100	80	1.75	2048
3/4"	20	14	22	103	117	110	92	2	2049
1"	25	18	27	113	127	110	92	3.5	2050
1-1/4"	32	27	35	140	140	140	112	5	2051
1-1/2"	40	32	41.5	150	165	140	123	6	2052
2"	50	41.5	54	165	178	160	129	8.5	2053
2-1/2"	65	51	72	185	190	200	145	14.5	2054
3"	80	58	39	200	203	230	152	17	2055
4"	100	76	103	220	229	230	163	26	2056
5"	125	95	128	250	254	230	176	46	2057
6"	150	111	154	285	267	267	199	58	2058