

#### Description

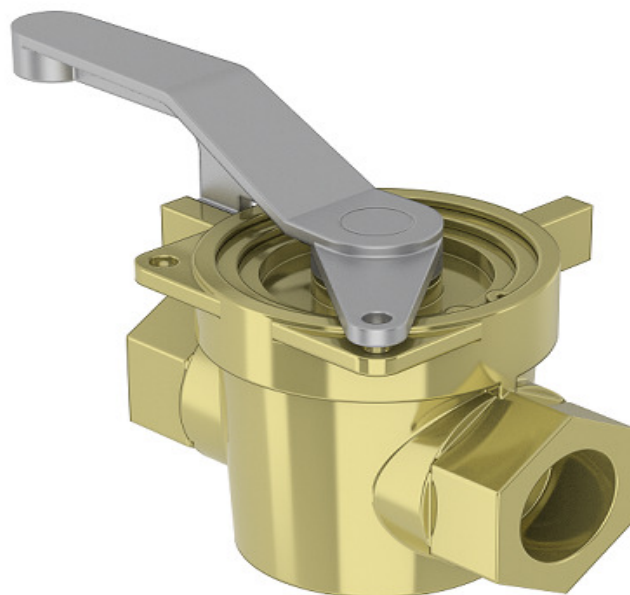
The PLV106 is a full bore non-return stop valve. A combined plug and check valve providing positive shut off and backflow prevention in a single valve. Manufactured as standard in Bronze to give long service life on seawater applications. In conformance with the Pressure Equipment Directive 97/23/EC

Standard Range,  
Sizes: 3/4" to 6"  
Connections: Screwed & PN16

Working pressure: 10 Bar  
Max. Working temperature: 104 degC

#### Features

Coated taper plug for smooth operation  
Renewable seats  
Resilient seated  
Top entry allows in-line maintenance



#### Options

Locking Facility (Open & Closed)

#### Materials

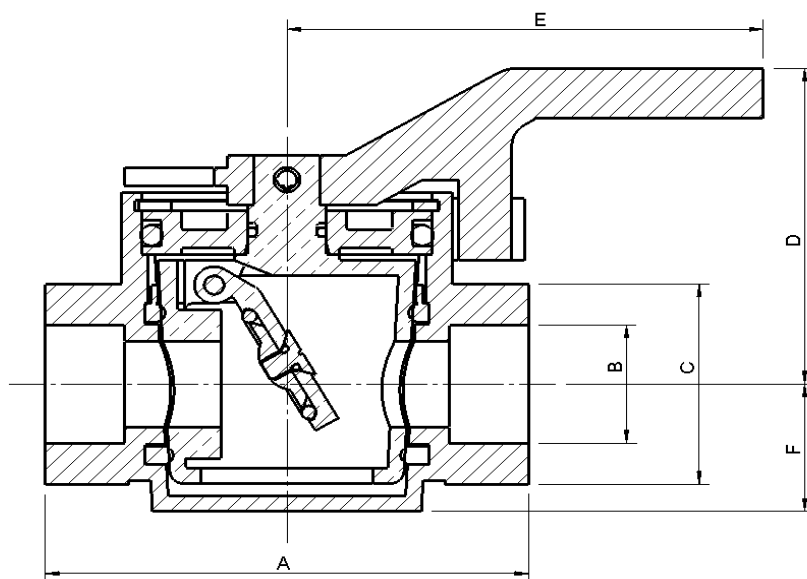
***Regularly manufactured in a full range of materials including:***

Nickel Aluminium Bronze – ASTM B148  
Nickel Aluminium Bronze - DS02 747 Part 3  
Gunmetal – DS02 830 Part 1  
Bronze – ASTM B61/B62  
Brass – HTB1  
Titanium – ASTM B367  
Hastelloy®  
Monel®

***Other materials available on request***

#### Specifications

Designed specifically for Naval Applications.

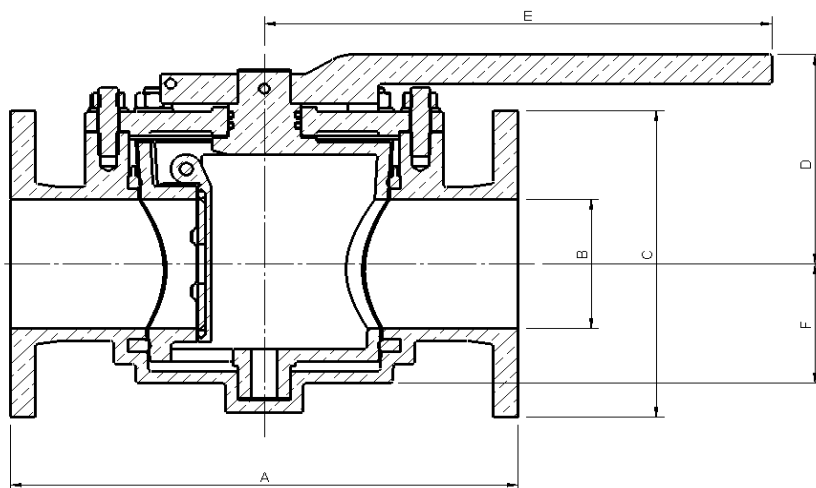


### Dimensions

### Screwed

VALVE SIZE		mm						WEIGHT	Drg
INCH	mm	A	B NB	C A/F	D	E	F	kg	
1"	25	116	22	50	83	115	32	2.5	1542
1 1/4"	32	130	27	50	87	130	35	3.5	1547
1 1/2"	40	150	35	60	100	150	43	5.75	1551

Working pressure: 10 Bar  
Max. Working temperature: 104 degC



**Dimensions**

**PN16**

VALVE SIZE		mm						WEIGHT	Drg
INCH	mm	A	B NB	C	D	E	F	kg	
3/4"	20	150	22	105	83	115	32	4	1602
1"	25	160	27	115	87	130	35	5.5	1604
1 1/4"	32	180	35	140	100	150	43	8	1606
1 1/2"	40	200	41.5	143	114	200	61	13.75	1554
2"	50	230	54	165	120	230	72	17	1556
2 1/2"	65	290	72	185	130	290	90	26	1564
3"	80	310	84	200	138	310	96	32.5	1525
4"	100	350	103	220	157	350	106	50	1577
5"	125	400	128	250	175	400	133	82	1588
6"	150	480	154	285	195	480	160	115	1592

Working pressure: 10 Bar

Max. Working temperature: 104 degC