

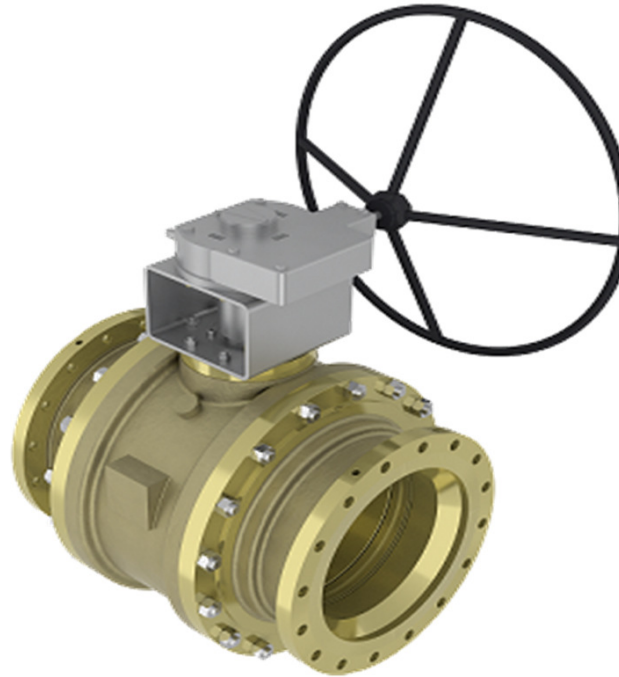
## Series: BAV16-2 3 Piece Trunnion Mounted Ball Valve

### Description

The BAV16-2 is a 3 piece side entry, reduced bore trunnion mounted ball valve, with integral cast flanges. Manufactured as standard in NiAlBr giving long service life on seawater applications.

In conformance with the Pressure Equipment Directive 2014/68/EU.

Standard Range,  
Sizes: 18" to 24"  
Connections: ANSI 150 & 300.



### Materials

**Regularly manufactured in a full range of materials including:**

Nickel Aluminium Bronze – ASTM B148  
Nickel Aluminium Bronze - DS02 747 Part 3  
Gunmetal – DS02 830 Part 1  
Bronze – ASTM B61/B62  
Brass – HTB1  
Titanium – ASTM B367  
Hastelloy®  
Monel®

**Other materials available on request**

### Features

Anti-static / Anti blowout stem  
Cavity pressure relieving seats  
Pressure equalising ball design  
Firesafe by design  
ISO 5211 mounting platform  
Bolted Bonnet  
Bi-directional Flow  
Spring loaded seats  
Solid Ball

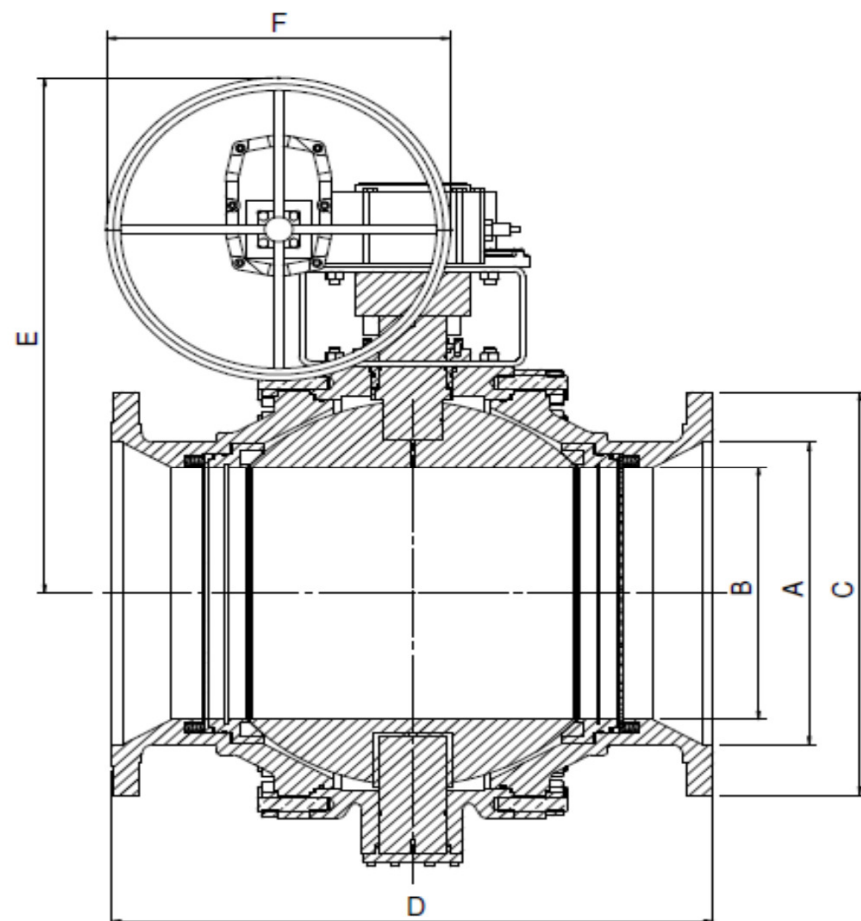
### Options

Bare shaft (for actuation by others)  
Actuation to customer specifications  
Locking facility (open & closed)  
Extended stems (insulation allowance)

### Specifications

ASME B16.5 Flange Dimensions  
ASME B16.10 Face to Face Length  
ASME B16.34 Wall Thickness  
PED Conformity  
Designed generally in accordance with: API 6D  
& ISO 17292 (formerly BS5351)

**Series: BAV16-2**  
**3 Piece Trunnion Mounted Ball Valve**

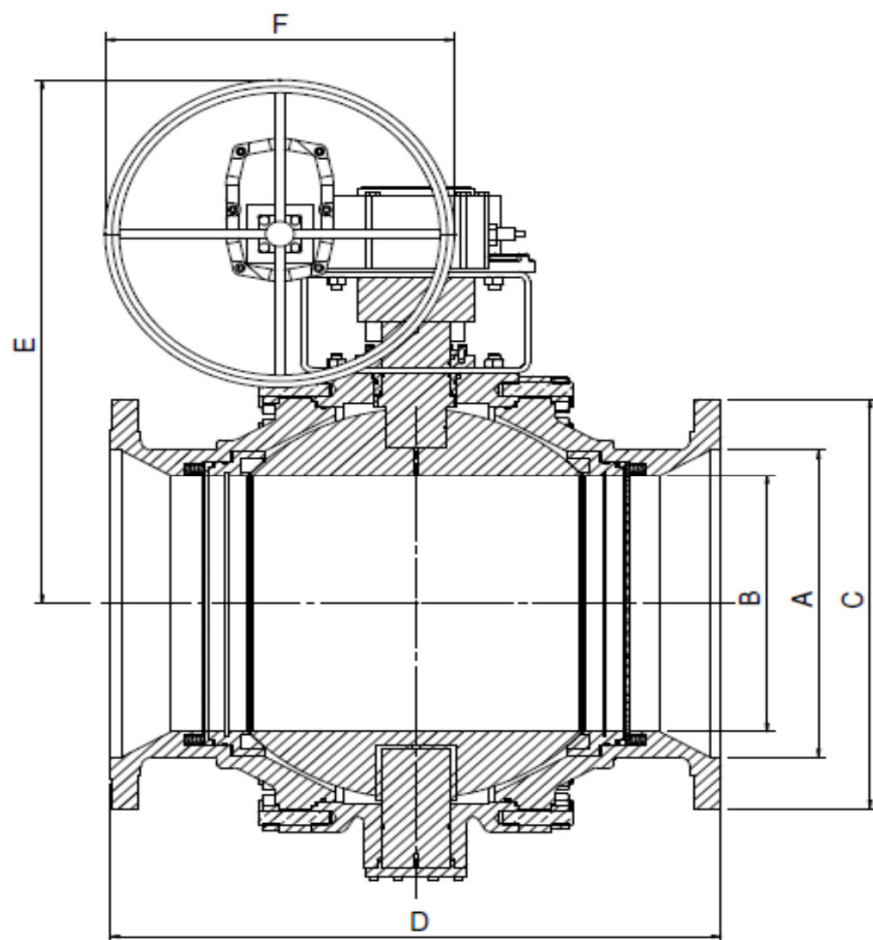


**Dimensions**

**ANSI 150**

VALVE SIZE		mm							WEIGHT
INCH	mm	A NB Pipe	B NB Ball	C	D	E	F LEVER HANDWHEEL		kg
18"	457	457	406	635	864	1219	G/BOX	914	1356
20"	508	508	406	699	914	1143	G/BOX	914	1496
24"	610	610	508	813	1067	1194	G/BOX	914	2240

**Series: BAV16-2**  
**3 Piece Trunnion Mounted Ball Valve**



**Dimensions**

**ANSI 300**

VALVE SIZE		mm							WEIGHT kg
INCH	mm	A NB Pipe	B NB Ball	C	D	E	F LEVER HANDWHEEL		
18"	457	457	406	711	915	916	G/BOX 600	1930	
20"	508	508	406	775	990	916	G/BOX 600	2005	
24"	610	610	508	915	1143	1374	G/BOX 914	3525	