

**Series: BAV15**  
**3 Piece Barstock Floating Ball Valve**

**Description**

The BAV15 is a 3 Piece barstock, full bore floating ball valve, made from bar stock. Manufactured as standard in NiAlBr giving long service life on seawater applications.

In conformance with the Pressure Equipment Directive 2014/68/EU.

Standard Range,  
Sizes: 3/8" to 2"  
Connections: Screwed

Pressure Class 900#  
Max Working pressure:  
2000 psi with suitable seat material.

**Features**

Anti-static / Anti blowout stem  
Cavity pressure relieving seats  
Pressure equalising ball design  
Bi-directional Flow  
Solid Ball

**Options**

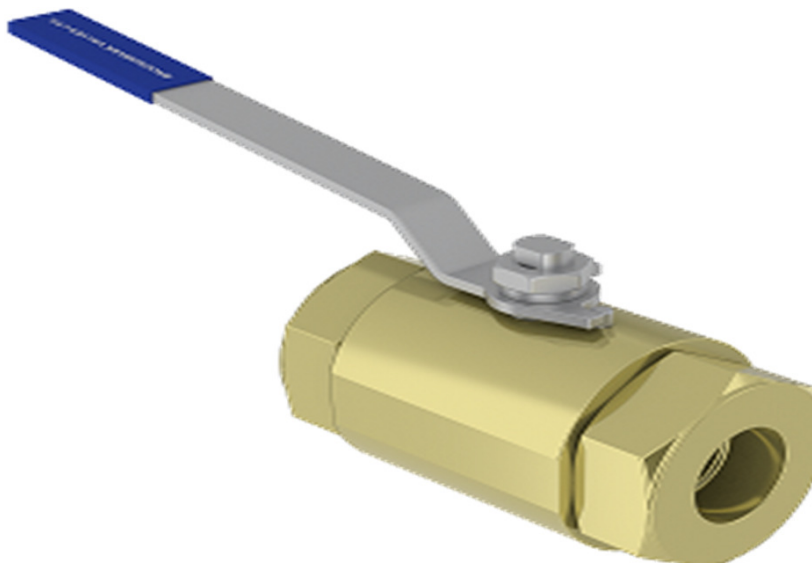
Locking facility (open & closed)  
Extended stems (insulation allowance)  
Range of seat materials:  
PTFE, RPTFE, etc.

**Materials**

***Regularly manufactured in a full range of materials including:***

Nickel Aluminium Bronze  
Bronze  
Titanium  
Hastelloy®  
Monel®

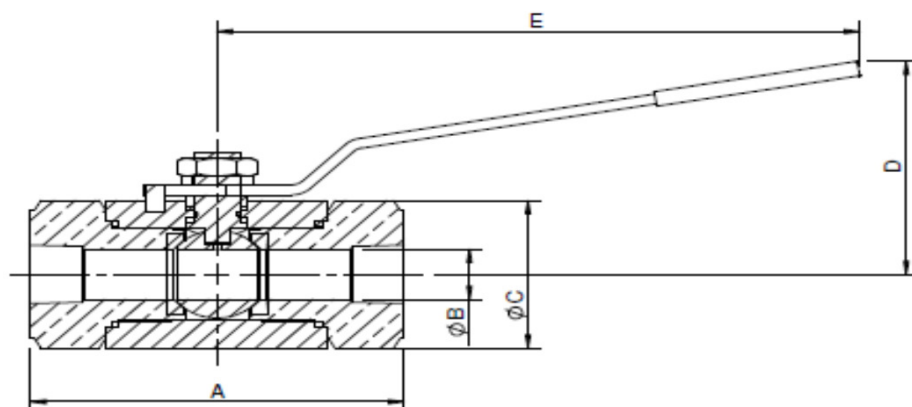
***Other materials available on request***



**Specifications**

ASME B1-20.1 Screwed Ends  
ASME B16.34 Wall Thickness  
PED Conformity  
Designed generally in accordance with: API 6D  
& ISO 17292 (formerly BS5351)

**Series: BAV15**  
**3 Piece Barstock Floating Ball Valve**



**Dimensions**

**Screwed NPT**

VALVE SIZE		mm					WEIGHT
INCH	mm	A	B NB Ball	C	D	E	kg
3/8"	10	84	10	35	59	115	0.5
1/2"	15	95	13	41	58	115	0.5
3/4"	20	116	19	54	73	150	2
1"	25	161	25	75	108	275	3
1 1/4"	30	180	32	100	120	275	9.1
1 1/2"	40	180	38	100	120	275	8.9
2"	50	229	51	132	150	300	17.3

Pressure Class 900#  
Max Working pressure:  
2000 psi with suitable soft trim.