

**Series: BAV118**  
**2 Piece Floating Ball Valve**

**Description**

The BAV118 is a flanged 2 Piece bolted body, full bore (1/2" is RB) floating ball valve, of wrought / forged construction. Manufactured as standard in specialist alloys for long service life in highly corrosive applications.

In conformance with the Pressure Equipment Directive 2014/68/EU

Standard Range, Sizes: 1/2" to 3"  
Connections: ANSI 150

**Features**

Anti-static / Anti blowout stem  
Cavity pressure relieving seats  
Pressure equalising ball design  
Bi-directional Flow  
Solid Ball

**Options**

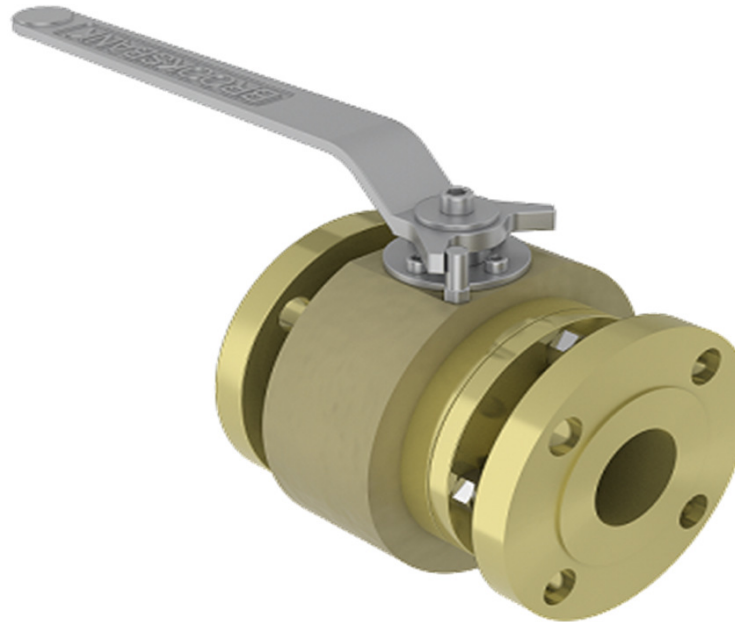
Locking facility (open & closed)  
Extended stems (insulation allowance)

**Materials**

*Regularly manufactured in a full range of materials including:*

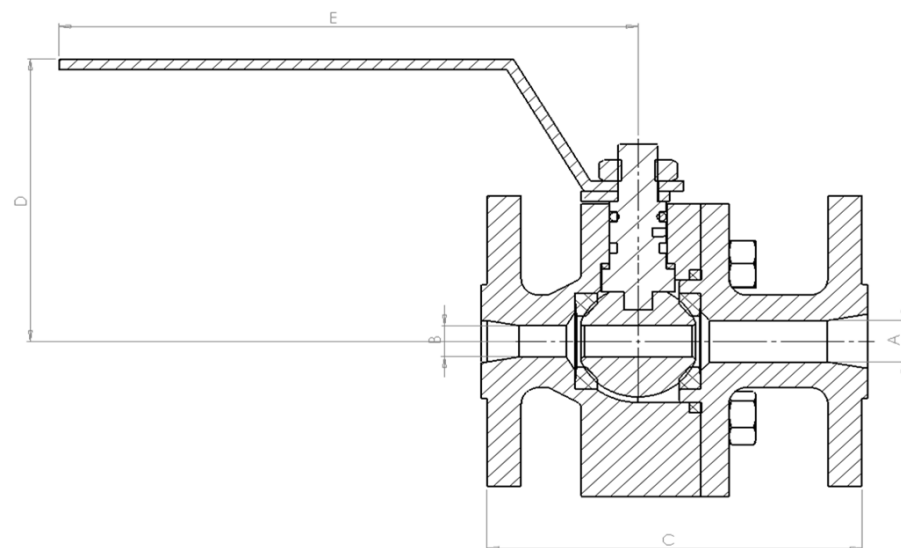
Nickel Aluminium Bronze  
Bronze  
Titanium  
Hastelloy®  
Monel®

*Other materials available on request*



**Specifications**

Designed specifically for Naval Applications.



**Dimensions**

**ANSI 150**

| VALVE SIZE |    | mm   |        |       |       |       | WEIGHT<br>kg | Drg  |
|------------|----|------|--------|-------|-------|-------|--------------|------|
| INCH       | mm | A    | B      | C     | D     | E     |              |      |
| 1/2"       | 15 | 12.7 | 9.5 RB | 105   | 87    | 162   | 2            | 3891 |
| 3/4"       | 20 | 12.7 | 12.7   | 115   | 87    | 162   | 2.5          | 3905 |
| 1"         | 25 | 19   | 19     | 127   | 100.1 | 203.2 | 4.1          | 3893 |
| 1 1/2"     | 40 | 25.4 | 25.4   | 165.1 | 117.9 | 148   | 7            | 3895 |
| 2"         | 50 | 38.1 | 38.1   | 177.8 | 117.4 | 204.8 | 10           | 3897 |
| 3"         | 80 | 50.8 | 50.8   | 203.2 | 140.5 | 228.6 | 11.6         | 3704 |