

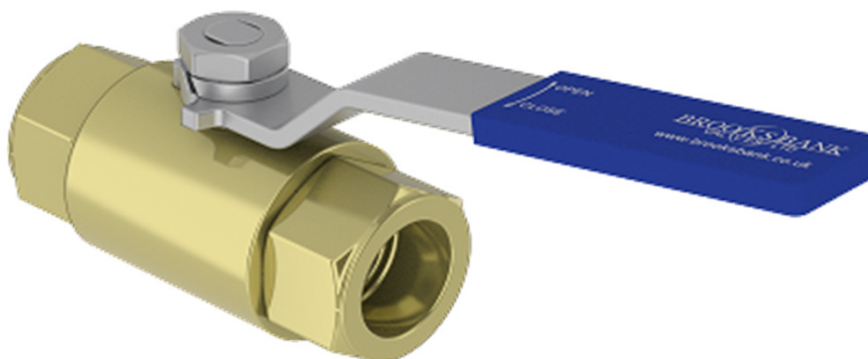
### Description

The BAV14 is a 3 Piece barstock, reduced bore floating ball valve, made from bar stock. Manufactured as standard in NiAlBr to giving long service life on seawater applications.

In conformance with the Pressure Equipment Directive 2014/68/EU.

Standard Range,  
Sizes: 1/2" to 2"  
Connections: Screwed

Pressure Class 900#  
Max Working Pressure:  
2000 psi with suitable seat material.



### Materials

**Regularly manufactured in a full range of materials including:**

Nickel Aluminium Bronze  
Bronze  
Titanium  
Hastelloy®  
Monel®

**Other materials available on request**

### Features

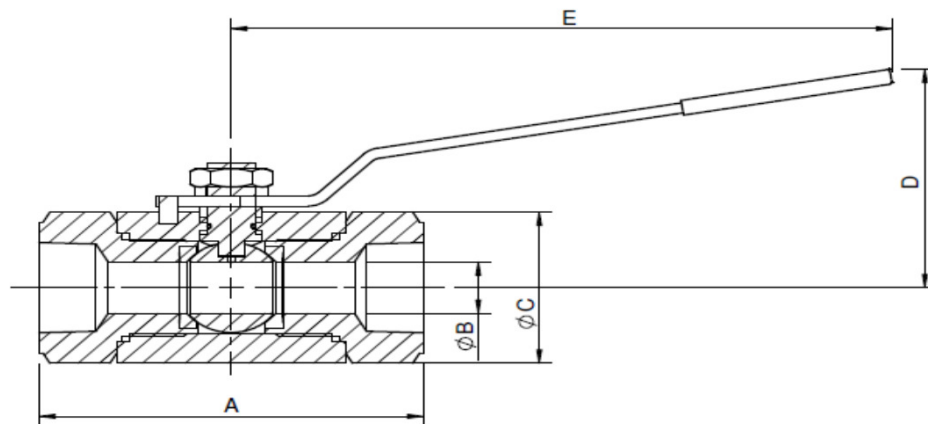
Anti-static / Anti blowout stem  
Cavity pressure relieving seats  
Pressure equalising ball design  
Bi-directional Flow  
Solid Ball

### Options

Locking facility (open & closed)  
Extended stems (insulation allowance)  
Range of seat materials:  
PTFE, RPTFE, etc.

### Specifications

ASME B1-20.1 Screwed Ends  
ASME B16.34 Wall Thickness  
PED Conformity  
Designed generally in accordance with: API 6D  
& ISO 17292 (formerly BS5351)



**Dimensions**

**Screwed NPT**

VALVE SIZE		mm					WEIGHT kg
INCH	mm	A	B NB Ball	C	D	E	
1/2"	15	84	10	35	54	115	0.5
3/4"	20	95	13	41	59	115	0.7
1"	25	116	20	54	73	150	1.6
1 1/2"	40	161	25	75	108	225	4.6
2"	50	180	38	100	120	275	8.6

Max Working Pressure:  
2000 psi with suitable soft trim.