

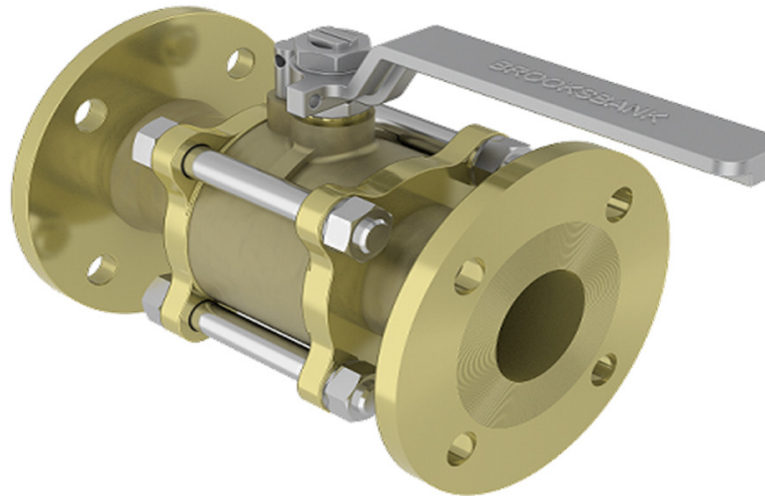
Series: BAV112
3 Piece Floating Ball Valve

Description

The BAV112 is a 3 Piece bolted body, full bore floating ball valve. Manufactured as standard in NiAlBr giving long service life on seawater applications.

In conformance with the Pressure Equipment Directive 2014/68/EU.

Standard Range, Sizes: 3/8" to 6"
Connections: PN16



Materials

Regularly manufactured in a full range of materials including:

Nickel Aluminium Bronze – ASTM B148 C95800
Nickel Aluminium Bronze - DS02 747 Part 3
Gunmetal – DS02 830 Part 1
Bronze – ASTM B61/B62
Brass – HTB1
Titanium – ASTM B367
Hastelloy®
Monel®

Other materials available on request

Features

Anti-static / Anti blowout stem
Cavity pressure relieving seats
Pressure equalising ball design
Bi-directional Flow
Solid Ball

Options

Locking facility (open & closed)
Extended stems (insulation allowance)

Specifications

- ASME B16.34 Wall Thickness
- PED Conformity
- Designed generally in accordance with: API 6D & ISO 17292 (formerly BS5351)

Dimensions

PN16

VALVE SIZE		mm					WEIGHT kg	Drg
INCH	mm	A	B	C	D	E		
3/8"	10	14	90	120	80	100	2	1909
1/2"	15	18	95	130	81	110	2.25	1910
3/4"	20	22	105	150	92	140	3.5	1911
1"	25	27	115	160	92	140	4.75	1912
1-1/4"	32	35	140	180	110	160	6.75	1913
1-1/2"	40	42	150	200	110	160	7.75	1914
2"	50	54	165	230	118	200	13	1915
2-1/2"	65	72	185	290	134	230	21.75	1916
3"	80	84	200	310	142	230	28.5	1917
4"	100	103	220	350	156	267	52	1918
5"	125	128	250	400	215	190	77.5	1919
6"	150	154	285	480	235	220	104	1920

