

Series: SCV34-35
Internal Mount - Swing Check Valve

Description

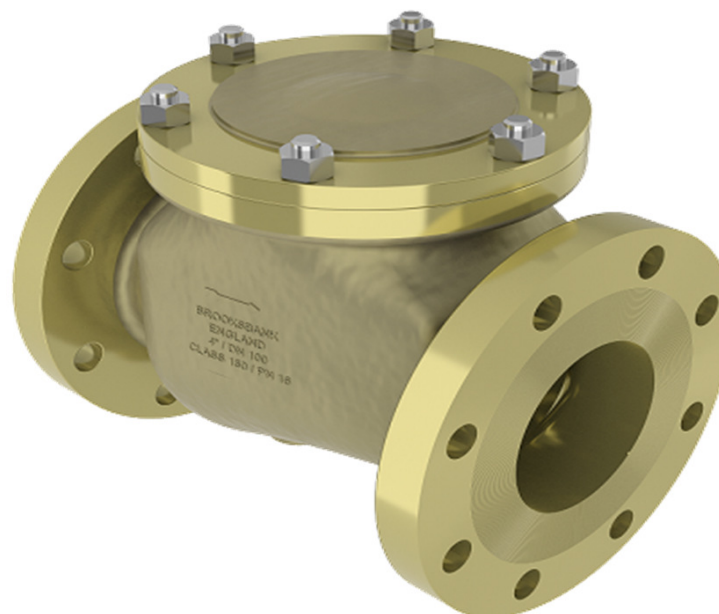
The SCV34/35 is a swing check valve, with internally retained disc shaft and integral cast flanges. Manufactured as standard in NiAlBr giving long service life on seawater applications.
In conformance with the Pressure Equipment Directive 2014/68/EU.

Standard Range,
SCV34 with integral seat,
Sizes: 2" to 12"
Connections: ANSI 150 & 300.

SCV35 with renewable seat,
Sizes: 2" to 12"
Connections: ANSI 150 & 300.

Features

Retaining pin through disc nut prevents backing off in service.
Simple internal fixing of disc and disc arm reduces leak paths and provides ease of maintenance.
Disc arm with angle provides improved sealing.
Sleek body design reduces weight of the assembly and improves flow characteristics.



Options

Integral or renewable seats
Drain plug

Materials

Regularly manufactured in a full range of materials including:

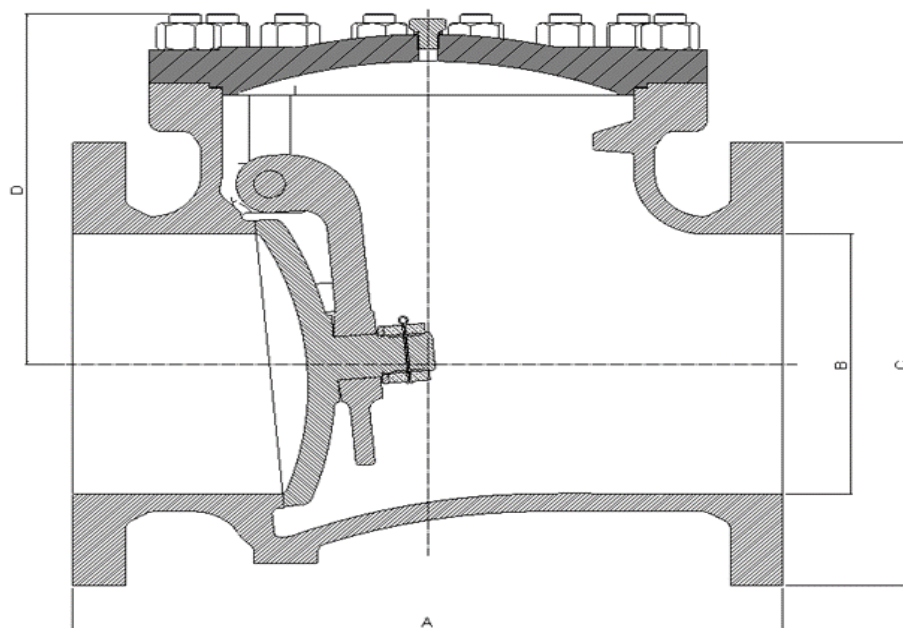
Nickel Aluminium Bronze – ASTM B148
Nickel Aluminium Bronze - DS02 747 Part 3
Gunmetal – DS02 830 Part 1
Bronze – ASTM B61/B62
Brass – HTB1
Titanium – ASTM B367
Hastelloy®
Monel®

Other materials available on request

Specifications

ASME B16.5 Flange Dimensions
ASME B16.10 Face to Face Length
ASME B16.34 Wall Thickness
PED Conformity
Designed generally in accordance with: BSEN 12288 Series A (formerly BS5154)

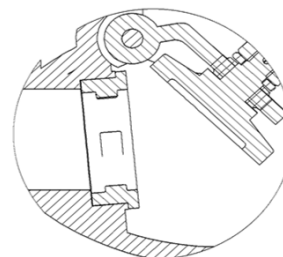
Series: SCV34-35 Internal Mount - Swing Check Valve



Dimensions

ANSI 150

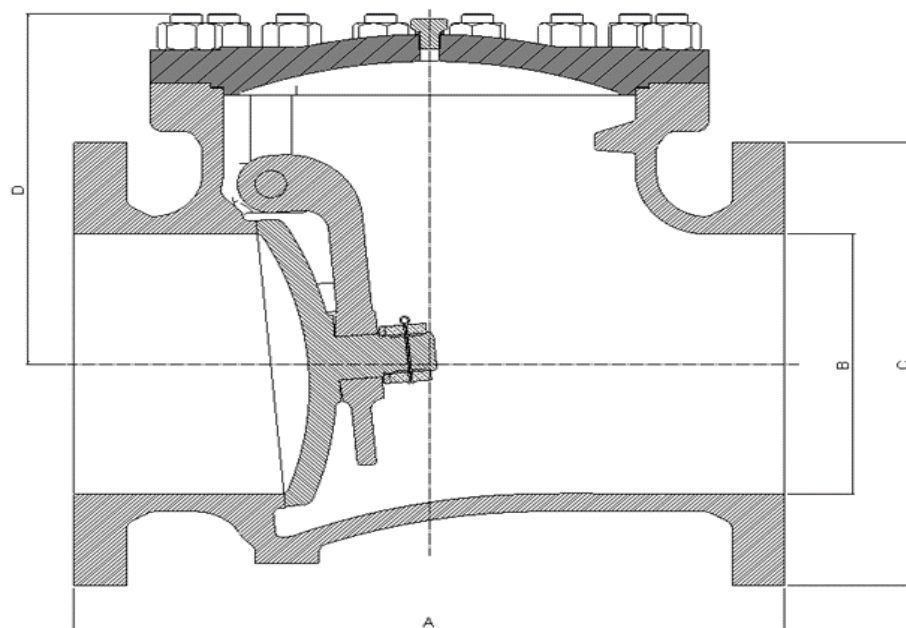
VALVE SIZE		mm				WEIGHT
INCH	mm	A	B NB Pipe	C	D	kg
2"	50	203	50	152	109	11
3"	80	241	76	191	137	19
4"	100	292	102	229	165	31
6"	150	407	152	279	224	65
8"	200	495	203	343	274	120
10"	250	622	254	406	325	176
12"	300	699	305	483	437	301



SCV34:
shown with integral seats

SCV35:
has renewable seats

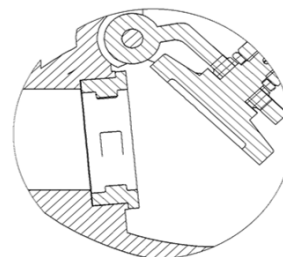
Series: SCV34-35
Internal Mount - Swing Check Valve



Dimensions

ANSI 300

VALVE SIZE		mm				WEIGHT
INCH	mm	A	B NB Pipe	C	D	kg
2"	50	267	50	165	119	15
3"	80	318	76	210	143	28
4"	100	356	102	254	175	46
6"	150	445	152	318	226	90
8"	200	533	203	381	285	167
10"	250	622	254	445	356	284
12"	300	711	305	521	411	406



SCV34:
shown with integral seats

SCV35:
has renewable seats