

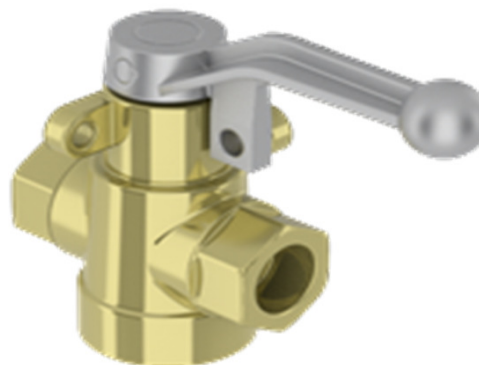
Description

The PLV100 is a full bore plug valve.
Manufactured as standard in Bronze to give long service life on seawater applications.

In conformance with the Pressure Equipment Directive 2014/68/EU.

Standard Range,
Sizes: 1/4" to 3-1/2"
Connections: Screwed & PN16

Working pressure:
Flanged 10 Bar
Screwed 12 Bar
Max. Working temperature: 104 degC



Materials

Regularly manufactured in a full range of materials including:

Nickel Aluminium Bronze – ASTM B148
Nickel Aluminium Bronze - DS02 747 Part 3
Gunmetal – DS02 830 Part 1
Bronze – ASTM B61/B62
Brass – HTB1
Titanium – ASTM B367
Hastelloy®
Monel®

Other materials available on request

Features

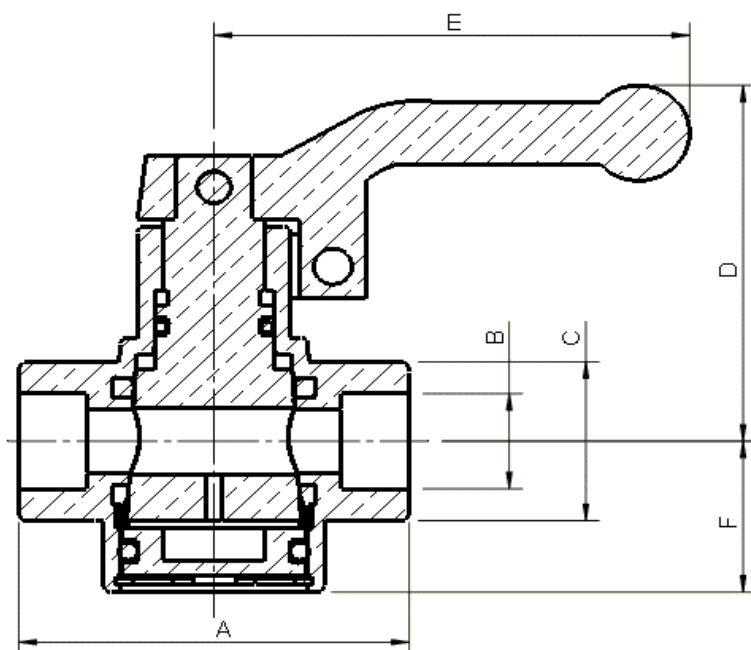
Coated taper plug for smooth operation
Renewable seats
Resilient seated
Top entry allows in-line maintenance

Options

Locking facility (Open & Closed)

Specifications

Designed specifically for Naval Applications.

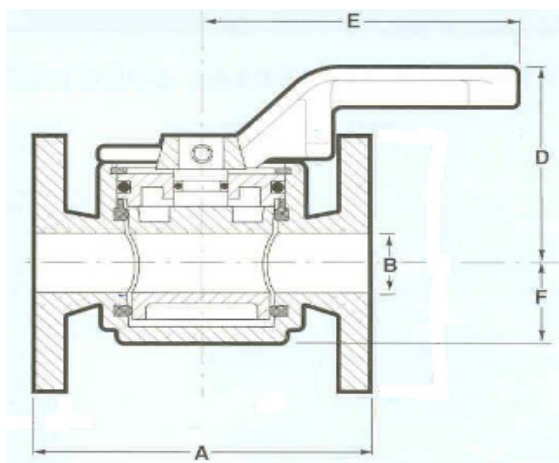


Dimensions

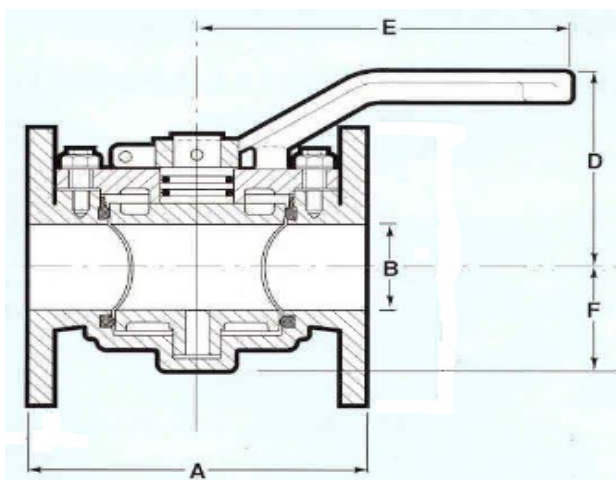
Screwed

VALVE SIZE		mm						WEIGHT kg	Drg
INCH	mm	A	B NB	C (HEX)	D	E	F		
1/4"	6	60	6.4	20.5	65	63.5	25.4	0.5	1318
3/8"	10	73	9.5	28.5	79	89	46	1	1309
1/2"	15	73	13	28.5	79	89	30	1	1311
3/4"	20	86	19	41.5	78	101	35	1.5	1316
1"	25	101	25.4	44.5	85	115	41	2.4	1307
1 1/4"	32	114	32	51	105	127	44.5	3.4	1314
1 1/2"	40	136.5	38	63.5	113	152.5	51	4.5	1320

Screwed rating 12 Bar



Upto 1.1/4" (32mm)



1.1/2" (40mm) & above

Dimensions

PN16

VALVE SIZE		mm						WEIGHT	Drg
INCH	mm	A	B NB	C	D	E	F	kg	
1/2"	15	108	15	98	79	89	81	1.5	1414
3/4"	20	117	20	105	78	102	35	2.5	1392
1"	25	127	25	114	86	114	41	4.5	1394
1 1/4"	32	140	32	121	105	127	44	5	1396
1 1/2"	40	165	40	130	113	152	51	7	1398
2"	50	178	50	146	140	165	76	14	1400
2 1/2"	65	190	65	159	148	178	83	17	1402
3"	80	241	80	178	150	203	95	22.5	1499
3 1/2"	95	241	89	187	150	203	95	24	1444

Flanged rating 10 Bar