

**Series: BAV02**  
**1 Piece Floating Ball Valve**

**Description**

The BAV02 is a 1 Piece end entry, full bore floating ball valve, with integral cast flanges. Manufactured as standard in NiAlBr giving long service life on seawater applications.

In conformance with the Pressure Equipment Directive 2014/68/EU.

Standard Range,  
Sizes: 1/2" to 1-1/4"  
Connections: ANSI 150 & 300.

**Features**

Anti-static / Anti blowout stem  
Cavity pressure relieving seats  
Pressure equalising ball design  
Firesafe by design  
ISO 5211 mounting platform  
Bi-directional Flow  
Solid Ball

**Options**

Bare shaft (for actuation by others)  
Actuation to customer specifications  
Locking facility (open & closed)  
Extended stems (insulation allowance)

**Materials**

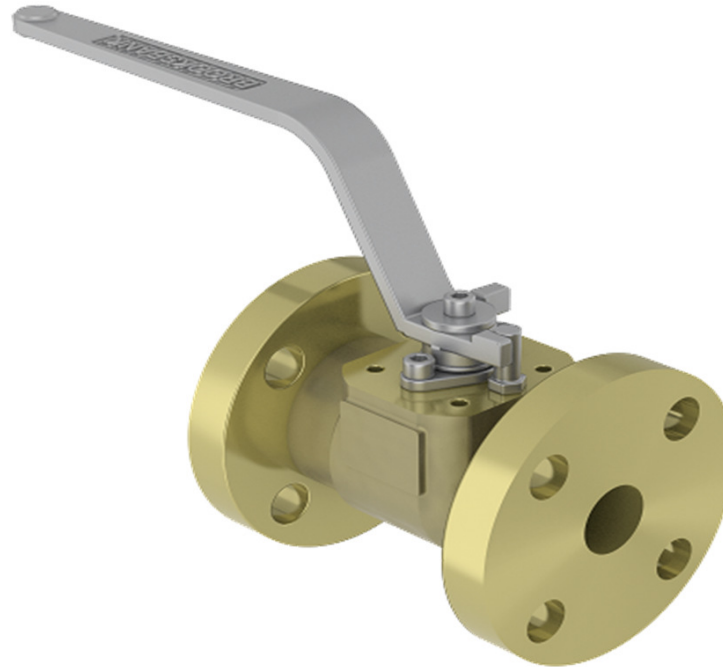
***Regularly manufactured in a full range of materials including:***

Nickel Aluminium Bronze – ASTM B148  
Nickel Aluminium Bronze - DS02 747 Part 3  
Gunmetal – DS02 830 Part 1  
Bronze – ASTM B61/B62  
Brass – HTB1  
Titanium – ASTM B367  
Hastelloy®  
Monel®

***Other materials available on request***

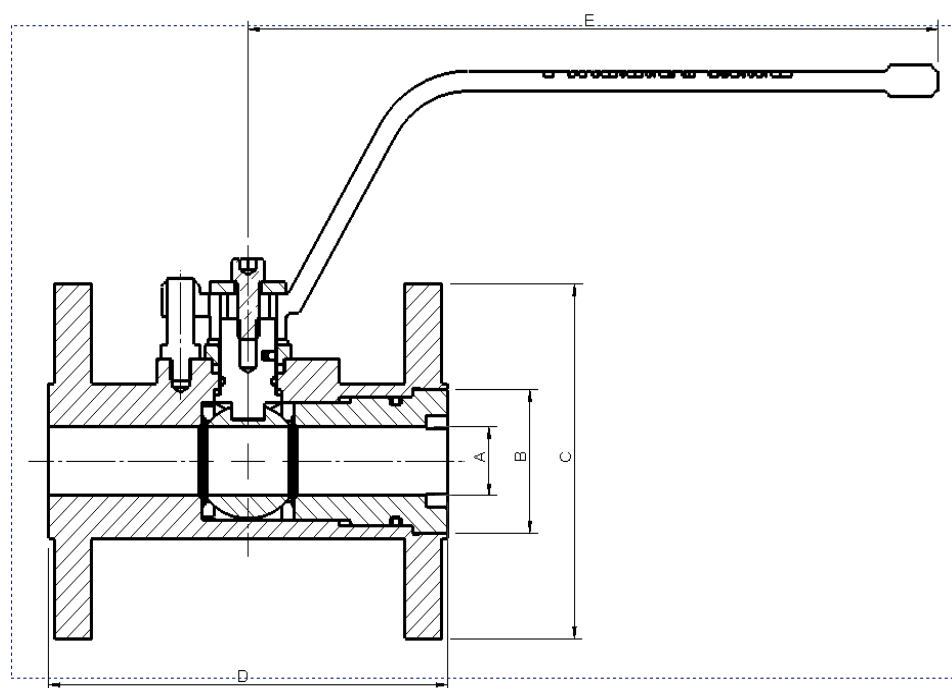
**Specifications**

- ASME B16.5 Flange Dimensions
- ASME B16.10 Face to Face Length
- ASME B16.34 Wall Thickness
- PED Conformity
- Designed generally in accordance with: API 6D & ISO 17292 (formerly BS5351)



**Dimensions**

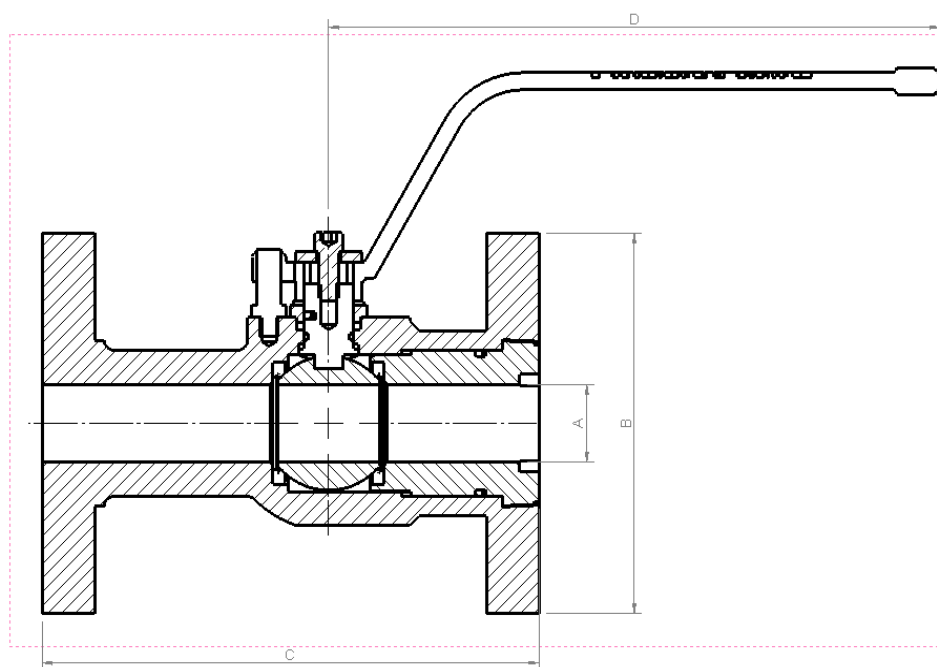
**ANSI 150**



VALVE SIZE		mm					WEIGHT kg
INCH	mm	A NB Ball	B	C	D	E	
1/2"	12	12	33	89	108	203	2
3/4"	20	20	40	98	117	203	3
1"	25	25	50	108	127	203	4
1 1/4"	30	30	64	117	140	203	5

**Dimensions**

**ANSI 300**



VALVE SIZE		mm					WEIGHT kg
INCH	mm	A NB Ball	B	C	D	E	
1/2"	12	12	33	89	108	203	2
3/4"	20	20	40	98	117	203	3
1"	25	25	50	108	127	203	4
1 1/4"	30	30	64	117	140	203	5