

**Series: PCV76-77**  
**Optional-Loaded Piston Check Valve**

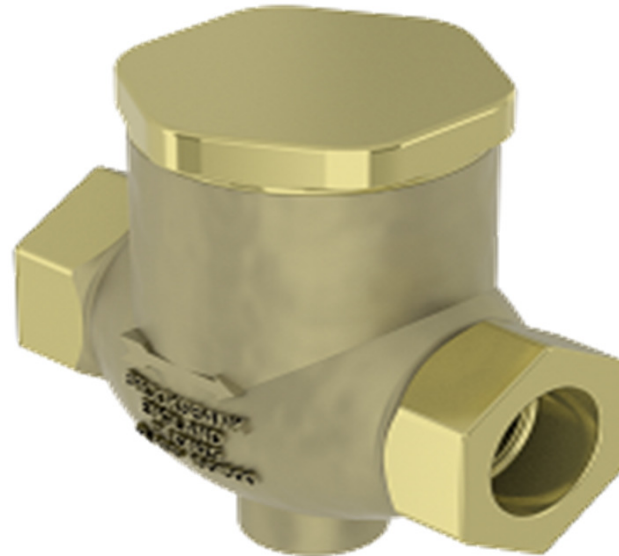
**Description**

The PCV76/77 is a piston check valve, with or without a spring-loaded piston and screwed connections. Manufactured as standard in NiAlBr giving long service life on seawater applications. In conformance with the Pressure Equipment Directive 2014/68/EU.

Standard Range,  
PCV76 with integral seat,  
Sizes: 1/2" to 2"  
Connections: Screwed.

PCV77 with removeable seat,  
Sizes: 1/2" to 2"  
Connections: Screwed.

Pressure class: 150/300#



**Materials**

***Regularly manufactured in a full range of materials including:***

Nickel Aluminium Bronze – ASTM B148  
Nickel Aluminium Bronze - DS02 747 Part 3  
Gunmetal – DS02 830 Part 1  
Bronze – ASTM B61/B62  
Brass – HTB1  
Titanium – ASTM B367  
Hastelloy®  
Monel®

***Other materials available on request***

**Features**

Screwed Bonnet

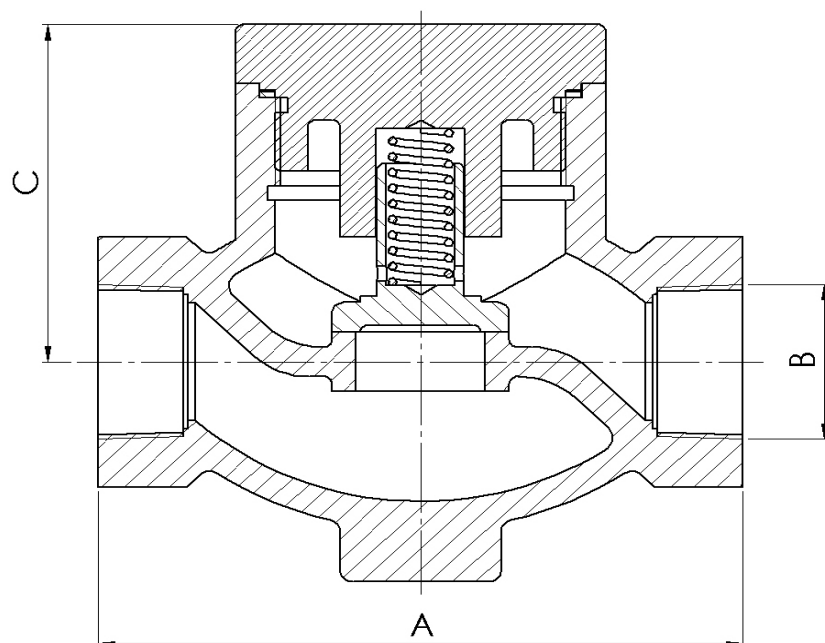
**Options**

Integral or renewable seats  
Drain plug  
Resilient seat  
Spring or Non-loaded piston  
Threads: NPT, BSPP, BSPT

**Specifications**

ASME B1.20.1 Screwed ends  
ASME B16.34 Wall Thickness  
PED Conformity  
Designed generally in accordance with: BSEN 12288 (formerly BS5154)

**Series: PCV76-77**  
**Optional-Loaded Piston Check Valve**



**Dimensions**

**Screwed NPT**

| VALVE SIZE |    | mm  |             |     | WEIGHT |
|------------|----|-----|-------------|-----|--------|
| INCH       | mm | A   | B<br>Thread | C   | kg     |
| 1/2"       | 15 | 108 | 1/2" NPT    | 64  | 1.8    |
| 3/4"       | 20 | 117 | 3/4" NPT    | 64  | 2.2    |
| 1"         | 25 | 127 | 1" NPT      | 73  | 2.7    |
| 1 1/4"     | 32 | 140 | 1 1/4" NPT  | 73  | 3.7    |
| 1 1/2"     | 40 | 165 | 1 1/2" NPT  | 87  | 5.2    |
| 2"         | 50 | 203 | 2" NPT      | 111 | 10.4   |

Pressure class: 150/300#