

Series: GLV44-45
Simple Bolted Bonnet Globe Valve

Description

The GLV44/45 is a globe valve, with a simple bolted bonnet, rising stem/handwheel and screwed connections. Manufactured as standard in NiAlBr giving long service life on seawater applications. In conformance with the Pressure Equipment Directive 2014/68/EU.

Standard Range,
GLV44 with integral seat,
Sizes: 1/2" to 2"
Connections: Screwed.

GLV45 with renewable seat,
Sizes: 1/2" to 2"
Connections: Screwed.

Pressure class 150# & 300#



Materials

Regularly manufactured in a full range of materials including:

Nickel Aluminium Bronze – ASTM B148
Nickel Aluminium Bronze - DS02 747 Part 3
Gunmetal – DS02 830 Part 1
Bronze – ASTM B61/B62
Brass – HTB1
Titanium – ASTM B367
Hastelloy®
Monel®

Other materials available on request

Features

Bolted Bonnet
Rising stem & handwheel
Swivel disc
Multiple ring stem packing
Back seat facility

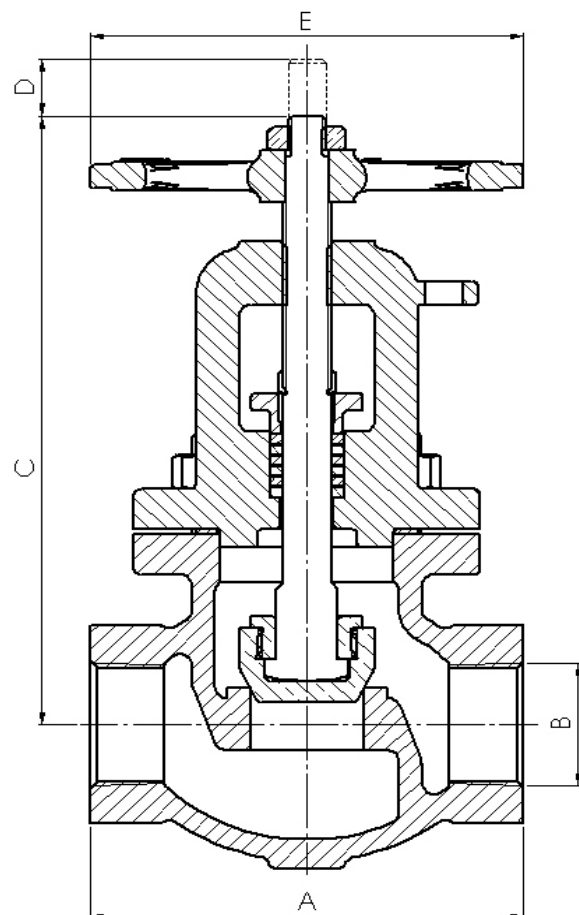
Options

Integral or renewable seats
Screw down non-return
Contoured plug
Needle plug
Locking facility
Alternative threads, NPT, BSPP, BSPT

Specifications

ASME B16.34 Wall Thickness
ASME B1-20.1 Screwed Ends
PED Conformity

Series: GLV44-45 Simple Bolted Bonnet Globe Valve

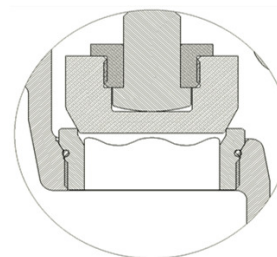


Dimensions

Screwed NPT

VALVE SIZE		mm unless stated					WEIGHT kg	
INCH	mm	A	B Thread	C	D	E	CLASS 150	CLASS 300
1/2"	15	83	1/2" NPT	130	9	102	1.5	1.8
3/4"	20	95	3/4" NPT	148	10	102	2.1	2.5
1"	25	111	1" NPT	168	16	102	3.4	4
1 1/2"	40	152	1 1/2" NPT	199	19	127	6	7
2"	50	178	2" NPT	221	22	178	11	13

Pressure Class 150# & 300#



GLV44:
shown with integral seats

GLV45:
has renewable seats