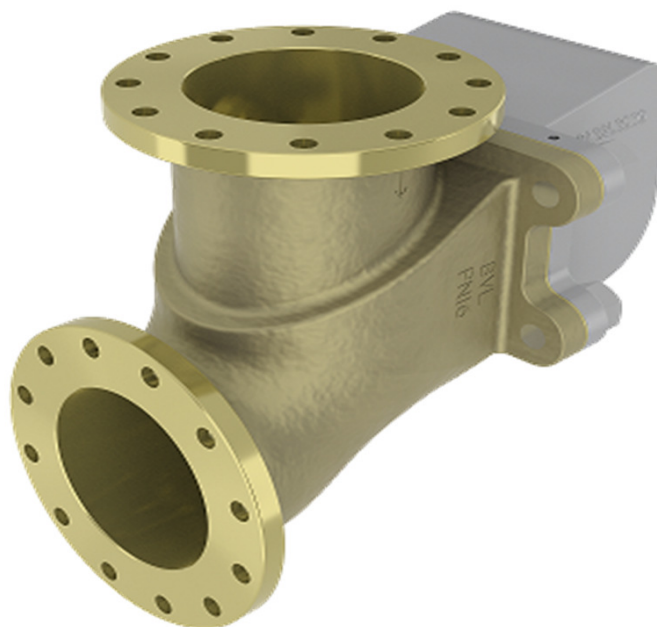


#### Description

The STV81 is a right angled storm valve, back balanced with integral cast flanges. Manufactured as standard in bronze ive long service life on seawater applications.

In conformance with the Pressure Equipment Directive 2014/68/EU.

Standard Range,  
Sizes: 1" to 8"  
Connections: PN16



#### Materials

***Regularly manufactured in a full range of materials including:***

Nickel Aluminium Bronze – ASTM B148  
Nickel Aluminium Bronze - DS02 747 Part 3  
Gunmetal – DS02 830 Part 1  
Bronze – ASTM B61/B62  
Brass – HTB1  
Titanium – ASTM B367  
Hastelloy®  
Monel®

***Other materials available on request***

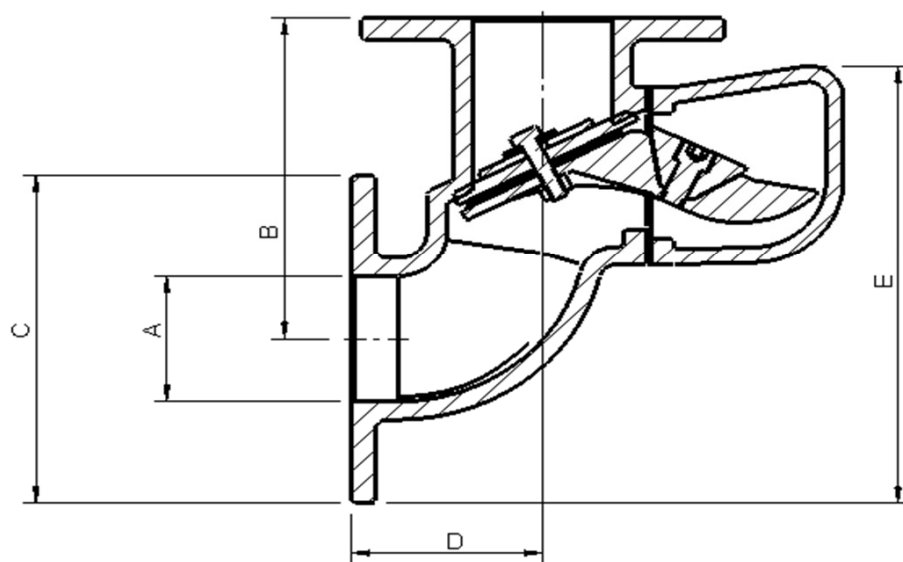
#### Features

Angled 90deg  
Back balanced

#### Options

#### Specifications

Designed specifically for Naval Applications.



**Dimensions**

**PN16**

VALVE SIZE		mm					WEIGHT kg
INCH	mm	A	B	C	D	E	
1"	25	1"	152	115	92	169	5.5
1-1/4"	32	1-1/4"	152	140	92	182	6
1-1/2"	40	1-1/2"	152	150	92	199	8
2"	50	2"	160	165	102	216	10.5
2-1/2"	65	2-1/2"	165	185	105	226	12
3"	80	3"	195	200	105	266	19
4"	100	4"	220	220	127	303	31.5
5"	125	5"	320	250	82.5	415	77.5
6"	150	6"	325	285	130.5	433	82.5
8"	200	8"	372.5	340	216	506	130.5