

Description

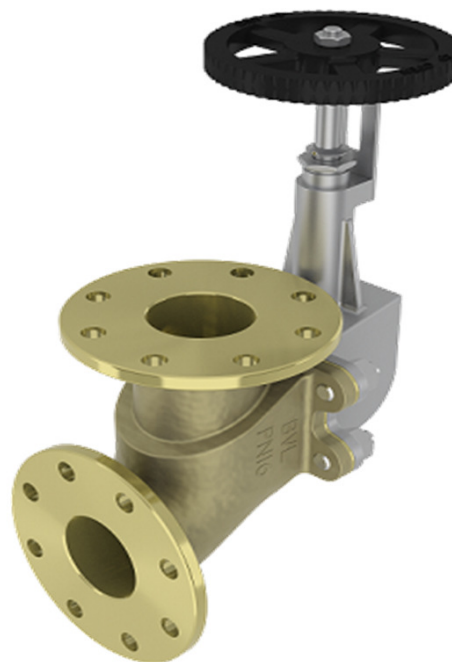
The STV80 is a right angled storm valve, back balanced with gear operation and integral cast flanges. Manufactured as standard in bronze giving long service life on seawater applications.

In conformance with the Pressure Equipment Directive 2014/68/EU.

Standard Range,
Sizes: 1" to 8"
Connections: PN16

Features

Angled 90deg
Open/shut indicator
Back balanced
Gear operated



Options

Materials

Regularly manufactured in a full range of materials including:

Nickel Aluminium Bronze – ASTM B148
Nickel Aluminium Bronze - DS02 747 Part 3
Gunmetal – DS02 830 Part 1
Bronze – ASTM B61/B62
Brass – HTB1
Titanium – ASTM B367
Hastelloy®
Monel®

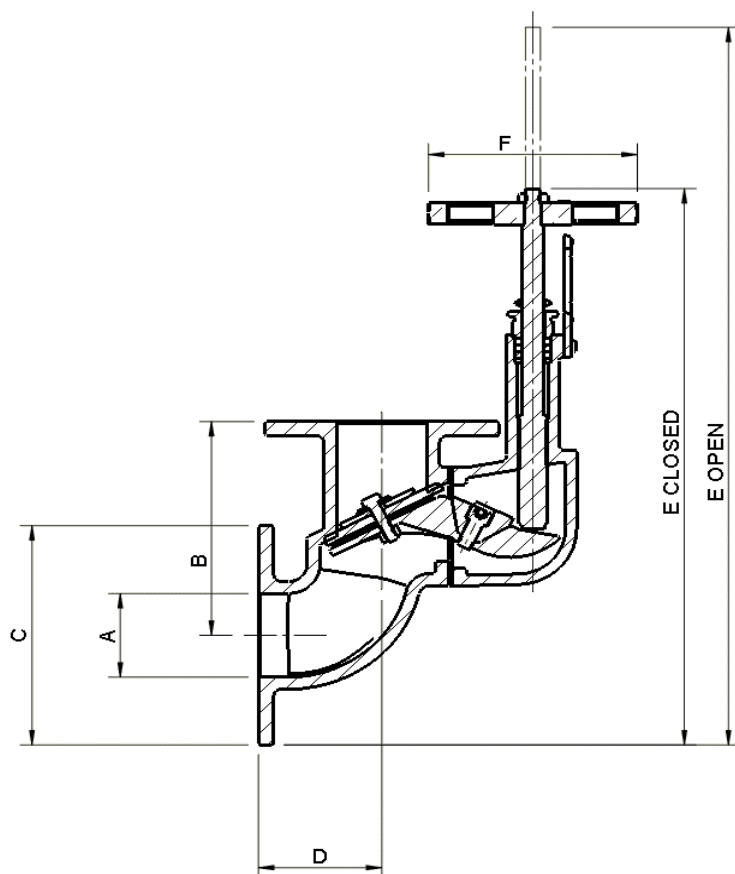
Other materials available on request

Specifications

Designed specifically for Naval Applications.

Dimensions

PN16



VALVE SIZE		mm							WEIGHT kg
INCH	mm	A	B	C	D	E CLOSED	E OPEN	F	
1"	25	25	152	115	92	357.5	387	138	7.5
1-1/4"	32	32	152	140	92	370	400	138	8
1-1/2"	40	40	152	150	92	420	458	138	10
2"	50	50	160	165	102	500	531	178	15
2-1/2"	65	65	165	185	105	510	542	178	16
3"	80	80	195	200	105	508	550	178	25
4"	100	100	220	220	127	650	713	178	42
5"	125	125	320	250	175	830	913	178	98
6"	150	150	325	285	175	848	931	178	103
8"	200	200	372.5	340	216	992	1094	178	166